



## Up the Salcombe and Kingsbridge Estuary

Salcombe has long been a favoured haunt of visiting boaters to the South West.

Once a thriving fishing and shipbuilding port, it is now a favoured holiday destination offering sandy beaches, water sports, restaurants, posh shops and great ice cream.

The Salcombe Estuary is not a river but a valley, flooded by the sea. There are no marinas, just anchorages, visitors buoys and a few pontoons; but well-sheltered and served by harbour taxis.

The bustling town of Kingsbridge is at the head of the estuary and branching off are intriguing creeks including Frogmore and South Pool, which reward explorers with tranquillity and refreshment.

Day boat-hire also allows non boat-owners to explore the creeks and beaches on a day out.

## Salcombe Approach



Looking South West to Black Rock at LW.  
(Chart point 1)

After crossing Salcombe Bar, four new lit buoys mark the channel as it rounds Black Rock. Heading North East towards Salcombe and passing Sunny Cove anchorage on the eastern bank, the Salcombe Estuary beckons.

Salcombe Harbour Hotel marks the speed limit reduction from 8 to 6 knots. Numerous visitors' buoys on both sides of the channel run up towards Salcombe.

Small yellow fairway buoys mark the eastern edge of a channel useful for all water users when dinghy racing obscures the main estuary.



Salcombe Harbour Hotel. (Chart point 2)

## Salcombe



Two visitors' buoys and five fairway buoys; keep to the west of them when swarms of dinghies  
(Chart point 2)

Salcombe has two pontoons: Normandy pontoon has water and berthing limited to ½ hour; visitors can moor inside.

Whitestrans pontoon is used by commercial operators and the inside is mostly used by Salcombe mooring holders.



Starboard posts leading to Salcombe.

Salcombe is host to numerous festivals and regattas throughout the year including the Festival of Music and Sail in June and the Salcombe Yacht Club and Salcombe Town regattas both, in August.

Visitor mooring buoys are placed on either side of the channel, south of the fuel barge; during busy periods rafting is necessary. Two anchorages lie on the Eastern bank, off the beaches.

Passing Salcombe and the fuel barge, the estuary divides and heads North East to South Pool or North to Kingsbridge.

## To South Pool

Heading East finds South Pool Creek entrance. The creek is a great place to explore in a dinghy on the tide for first timers. Scoble Point marks the Northern side of the Creek, initially deeper water lies to the South following the moorings.



Scoble Point at the start of South Pool Creek (Chart point 4).

After approximately 0.5 mile the creek forks: to port continuing North East to South Pool; to starboard heading into Waterhead Creek.

The creek is not marked by posts but the age old rule of ‘deep water follows the outside of a bend’, keeps you away from the shallower bits.



South Pool Creek; good watching but watch your wake.

On reaching South Pool, the visitors pontoon to port is accessible two hours either side of high water. The award winning gastro pub, the Milbrook Inn is a short walk.



Visitor pontoon at South Pool (Chart point 5)

## ‘Egremont’ and ‘The Bag’

Back to Salcombe again, this time heading North East then North around Snapes Point, the estuary opens up to reveal ‘The Bag’.

The Western bank offers a visitor pontoon in the river available for overnight berthing. To the East, ‘Egremont’, the Island Cruising Club’s (ICC) water-base comes into view.

Egremont is an ex Mersey ferry, but now offering shower facilities and a bar to visiting boaters over the weekends.



The ICC and Egremont. (Chart Point 6)

The ICC is an RYA Training Centre and offers dinghy and keelboat hire; it’s a great place to drop the kids off for a day or weeks fun, allowing you time to relax.

## Frogmore Creek

An anchorage lies just upstream of Halwell Point at the entrance to Frogmore Creek. Stay closer to Halwell Point as this southern bank initially offers deeper water.



Looking East into Frogmore Creek at LW. Hawell Point to starboard. (Chart point 7)

**Note:** The Saltstone is a distinctive rock with a starboard post on top. It’s North of the Frogmore Creek and marks the starboard side of the estuary and not the starboard side of Frogmore Creek.



Saltstone visible at LW. Starboard marker indicating the Kingsbridge channel and not Frogmore Creek (Chart point 8)

Port hand posts indicate deeper water as the channel snakes the 1.5 miles to Frogmore.

At the top of the creek, Frogmore Boatyard pontoon, to starboard, is accesible two hours either side of high water for dinghies and shallow draft boats. There is a local shop, bakery and the Globe Inn.



**Final approach to Frogmore. Visitors pontoon to starboard. (Chart point 9)**

**Red cans forking to starboard marking Balcombe Creek channel (Chart point 10).**

## Kingsbridge

Back in the Estuary again, 0.5 mile past The Saltstone the well-marked channel forks- marked by posts the port channel heads towards Kingsbridge- marked by cans the starboard channel heads towards Balcombe creek. Follow the posts to Kingsbridge.

Head North following the posts towards the shore at Southville, where the channel heads West briefly before heading towards Kingsbridge again.

Kingsbridge is navigable for about 2.5 hours either side of high water for shoal draft boats.

The visitors pontoon is on the west of the basin dries to 3.4m, additional mooring is on the sea wall north of the pontoon.

Kingsbridge is a bustling market town; weekly street markets and nearby supermarket make for a worthwhile stop.





Kingsbridge Channel nearing Southville  
(Chart point 11)



Looking North to Kingsbridge and South from the visitor pontoon. (Chart point 12)

---

## Fact file

### Web/Contact

Salcombe Harbour	<a href="http://www.salcombehairbour.co.uk">www.salcombehairbour.co.uk</a>
Salcombe Yacht Club	<a href="http://www.salcombeyc.org.uk">www.salcombeyc.org.uk</a>
Island Cruising Club	<a href="http://www.icc-salcombe.co.uk/">www.icc-salcombe.co.uk/</a>
Frogmore Boatyard	<a href="http://www.frogmoreboatyard.co.uk/">www.frogmoreboatyard.co.uk/</a>
The Globe Inn	<a href="http://www.theglobeinn.co.uk/">www.theglobeinn.co.uk/</a>
The Millbrook Inn	<a href="http://www.millbrookinnsouthpool.co.uk">www.millbrookinnsouthpool.co.uk</a>

### VHF

Harbour Master	Ch.14
Yacht Taxi service	Ch. 12
Fuel Barge	Ch.06

### Tides

HW and LW times are within 5-10 minutes of Plymouth

Salcombe		Range	Heights	
	Spring	4.6m	MHWS 5.3	MLWS 0.7
	Neap	2.0m	MHWN 4.1	MLWN 2.1

### Public slipways

Salcombe, East Portlemouth, Kingsbridge and Frogmore

### Anchorage

Yachts are directed not to anchor in the fairway near to ferry landings or cable crossings. Consult your chart for exact positions and considerations

Sunny Cove

Smalls Cove

Ditch End

Saltstone

Frogmore Creek entrance.

### Charts

Imray C6, 2400.5 (folio)

BA 28, 1634, 1613, 5602 (folio)

**Thanks**

Chart 2400.5 is reproduced with the kind permission of Imray. [www.imray.com](http://www.imray.com)

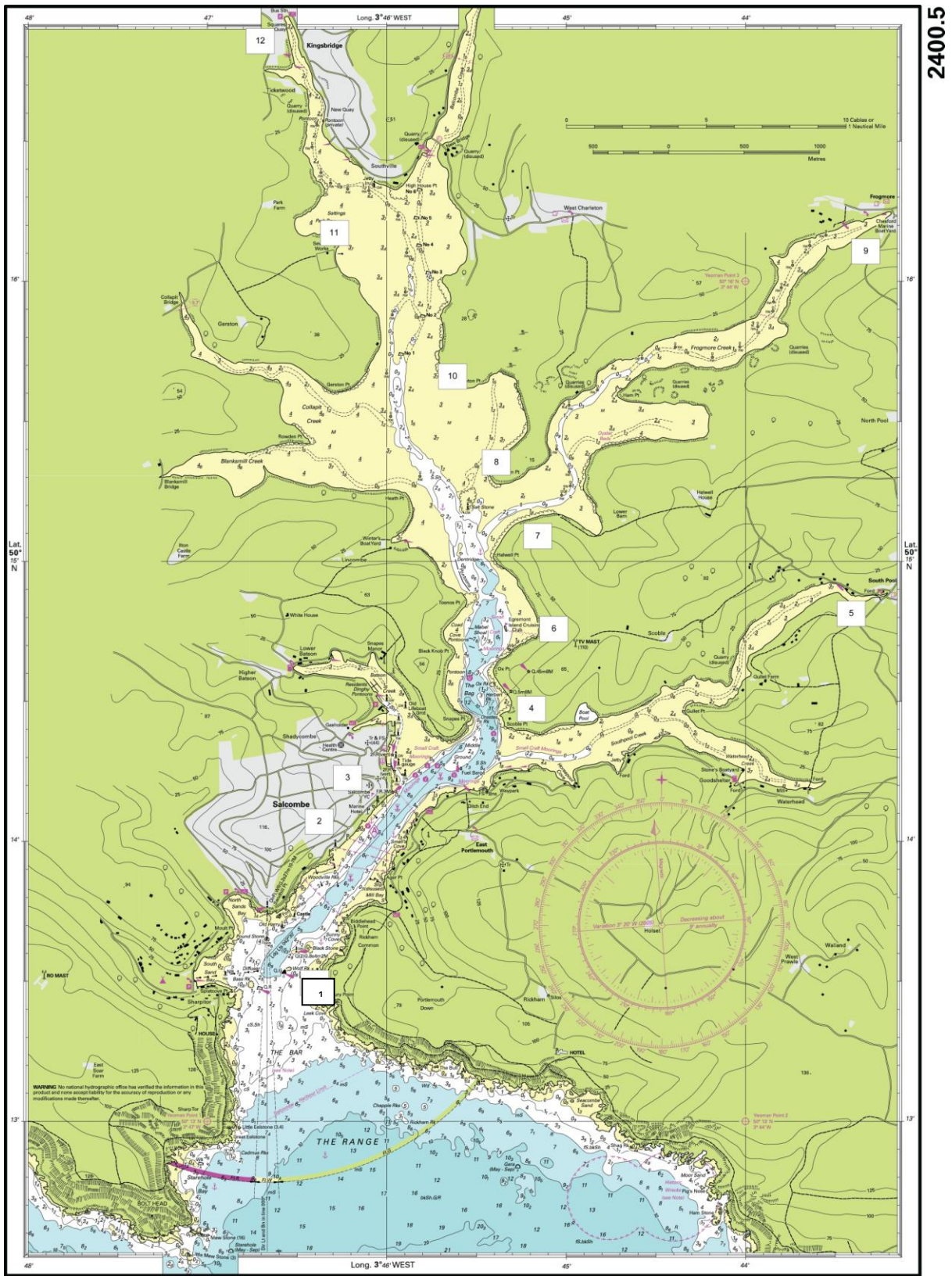
Chart copyright UKHO. [www.ukho.gov.uk](http://www.ukho.gov.uk)

Many thanks to the Island Cruising Club their kindness in providing a boat for the making of this article. <http://www.icc-salcombe.co.uk/>

Tel: 01548 844300

By Simon Jinks, Yachtmaster Examiner and Marine Journalist

Words and pictures ©SeaRegs 2011



2400.5

Printed and corrected to September 2004. Reprinted with the permission of the Hydrographic Office of the United Kingdom (Licence No. 10 15198701001) and the Controller of Her Majesty's Stationery Office. Printed and published by Insey Leslie Norie & Wilson Ltd, Wych House, The Broadway, Saint Ives, Cambridgeshire, PE27 5BT England. DEPTHS in METRES WGS 84 Edition 2002 2400.5